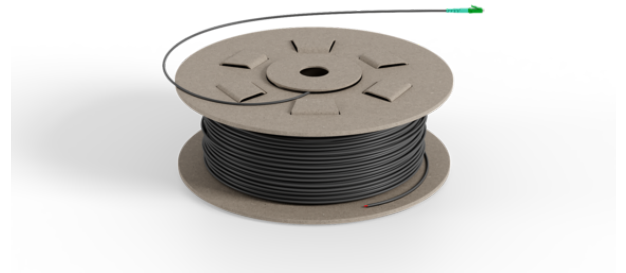


Product name	External drop cable OH/UG 1xG657A2 TB PUR OD 3mm LCA-Open 150m
Product code	123088
GTIN	7332811385131
ETIM-Class	EC001263



## PRODUCT SPECIFICATIONS

1F G657A2 pre-terminated 3mm overhead and underground (OH/UG) drop cables eliminating the need to splice fibres allows for time-saving installations. Depending on length the cables are delivered on coils or reels with alternative connectors in both ends or with open end. PIA approved and suitable for max 68 m span lengths. IEC connector loss grade B.

## Measurements

Length	235 mm
Height	235 mm
Width	160 mm
Weight	1,431 g

## Physical Characteristics

Fibre Count	1
Cable Construction	Tight Buffered (TB)
Fibre Type	ITU-T G.657 A2
Outer Sheath Material	PUR (Polyurethane)
Colour of Cable Sheath	Black
Cable Diameter	3 mm
Cable Diameter Tolerance	+/- 0.2 mm
Nominal Cable Weight	9 kg/km

## Technical Specifications - Cable Characteristics

Tensile Break Load	1,000 N
Tensile Strength (N) IEC-60794-1-21-E1	300 N
Crush Resistance - IEC- 60794-1-21-E3	1,000 N/10cm
Min. Bend Radius (During Installation) IEC-60794-1-21-E11	5 mm
Water Penetration Test IEC-60794-1-22-F5	1 m water head, 3m sample, 24 hours
Temperature Performance Installation IEC-60794-1-22-F1	-5°C to +60°C (Max. change in attenuation shall be $\leq 0.15$ dB/km)
Temperature Performance Operation IEC-60794-1-22-F1	-20°C to +60°C (Max. change in attenuation shall be $\leq 0.15$ dB/km)
Voltage Test 11 KV	If installed along power line minimum vertical distance of 1.8 m should be maintained
Max Span Length	68 m

## Technical Specifications - Fibre Characteristics

Fibre Type	ITU-T G.657 A2
Attenuation 1310nm	$\leq 0.33$ dB/km dB/km
Attenuation 1550nm	$\leq 0.22$ dB/km dB/km
Attenuation 1625nm	$\leq 0.25$ dB/km dB/km
Chromatic Dispersion 1285-1330nm	$\leq 3.5$ ps/(nm•km)
Chromatic Dispersion 1550nm	$\leq 18$ ps/(nm•km)
Chromatic Dispersion 1625nm	$\leq 22$ ps/(nm•km)
PMD (Max. Individual)	$\leq 0.2$ ps/√km
PMD (Link design value)	$\leq 0.06$ ps/√km
Cable cut off wavelength	$\leq 1260$ nm
MFD 1310nm	8.8 +/- 0.4 nm
MFD 1550nm	9.9 +/- 0.5 nm
Core-Cladding Concentricity Error	$\leq 0.5$ μm
Cladding Diameter	125 +/- 0.7 μm
Cladding Non Circularity	$\leq 0.7$ %
Primary Coating Diameter	242 ± 5 (Uncolored) / 250 ± 10 (Colored) μm