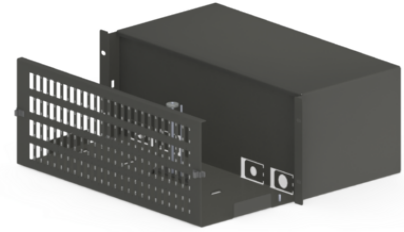


Product name	ODF 19 4U 96xSCD sliding Black, D230mm
Product code	5057757
GTIN	7332811086984
ETIM-Class	EC001130



PRODUCT SPECIFICATIONS

The draw-out-type ODF (optical distribution frame) is designed for the placement of up to 192 optical SC connectors indoors. The design of the patch panel enables to install it into a 19" rack. The ODF is equipped with needle holder for optical splice trays and strain reliefs for the cable FRP. Prepared for cable mounting at the rear (PG bushings).

- Capacity: Up to 192 optical SC connectors (96 duplex SC adaptors)
- Needle holder for optical splice trays
- Possibility to fit it with PG bushings
- Installation into a 19" base
- Height: 4U
- Depth: 230 mm
- Material: Black metal

Measurements

Length	490 mm
Height	195 mm
Width	235 mm
Weight	6,735 g

Technical Specifications - ODFs

Fibre Count	192
Adapter Plate	96xSC Duplex

Preterminated	No
Sliding Enclosure	Yes
Mounting Type	19" rack
Number of Rack Spaces	4 U
Depth - ODF	230 mm
Colour	Black RAL 9005
Material	Powder Coated Steel Sheet
Environment	Indoor