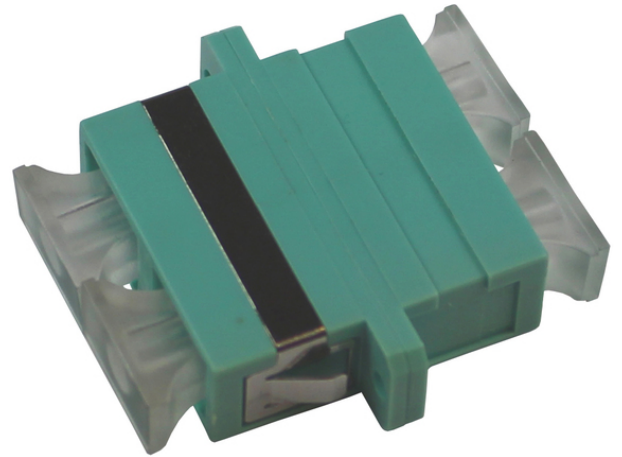


Product name	Adapter SC/PC MM DX aqua plastic housing
Product code	5063116
GTIN	7332811135927
ETIM-Class	EC000752



PRODUCT SPECIFICATIONS

Fibreoptic adapters (also called couplers) are designed to connect fibreoptic connectors together. They come in versions to connect single fibres together (simplex), two fibres together (duplex) and four fibres together (quad). The adapters have clips for click in function with optional screw holes.

All adaptors conforms with Telcordia, ANSI, TIA/EIA, NTT and JIS.

Measurements

Length	35 mm
Height	10 mm
Width	35 mm
Weight	7 g

Technical Specifications

Connector Type	SC
Adaptor Type	Duplex
Adaptor Colour	Aqua
Sleeve Type	Phosfor Bronze (Phbr)
Flanges	Yes
Transparent Dustcover	Yes
Max Attenuation	0.2

Attenuation Variation

max 0.20db after 1000 matings.

Temperature ranges for Operation

-40°C - +85°C