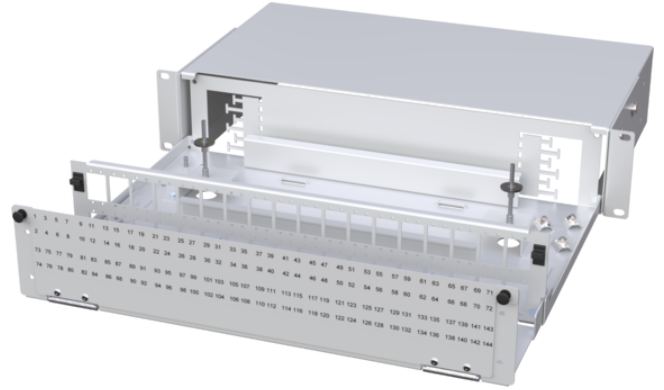


Fiber Optic Patch Panel UHD (Ultra High Density)

Fiber Optic Patch Panel Ultra High Density (UHD) 1U/2U. The patch panel is made of rugged alu-zinc metal and has a durable powder-coat finish coming in light gray color. The craft-friendly fiber optic trays and an integrated fiber storage allow comfortable assembly.



- Capacity up to 144 splices (1U version)
- Capacity up to 288 splices (2U version)
- Capacity up to 72xSC/144xLC connectors (1U version)
- Capacity up to 144xSC/288xLC connectors (2U version)
- Increased corrosion resistance (alu-zinc material)
- High connector density
- Removable patchcord support
- Depth adjustable 19" mounting brackets
- Removable Fiber Optic Trays to facilitate easy installation and maintenance
- Space for a fiber storage under the Fiber Optic Trays

Product number	Product name	Fibre Count	Adapter Plate
5055295	Optical Distribution Frame UHD 19" 1U 36xLCQ/SCD GRAY	144	36xLC Quad/SC Duplex
5055296	Optical Distribution Frame UHD 19" 2U 72xLCQ/SCD GRAY	288	72xLC Quad/SC Duplex
5055297	Optical Distribution Frame UHD 19" 1U 24xLCQ/SCD GRAY	96	24xLC Quad/SC Duplex
5055298	Optical Distribution Frame UHD 19" 2U 48xLCQ/SCD GRAY	192	48xLC Quad/SC Duplex