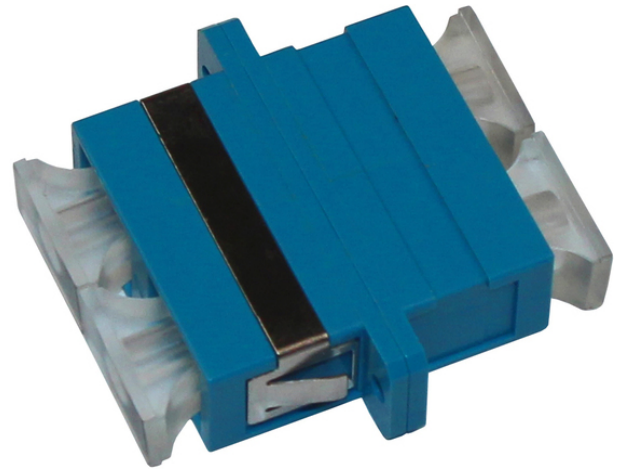


<b>Product name</b>	Adapter SC/UPC SM DX blue plastic housing
<b>Product code</b>	5063121
<b>GTIN</b>	7332811135972
<b>ETIM-Class</b>	EC000752



## PRODUCT SPECIFICATIONS

Fibreoptic adapters (also called couplers) are designed to connect fibreoptic connectors together. They come in versions to connect single fibres together (simplex), two fibres together (duplex) and four fibres together (quad). The adapters have clips for click in function with optional screw holes.

All adaptors conforms with Telcordia, ANSI, TIA/EIA, NTT and JIS.

## Measurements

<b>Length</b>	38 mm
<b>Height</b>	10 mm
<b>Width</b>	35 mm
<b>Weight</b>	6 g

## Technical Specifications

<b>Connector Type</b>	SC
<b>Adaptor Type</b>	Duplex
<b>Adaptor Colour</b>	Blue
<b>Sleeve Type</b>	Zirconia (ZrO2)
<b>Flanges</b>	Yes
<b>Transparent Dustcover</b>	Yes
<b>Max Attenuation</b>	0.2 dB

**Attenuation Variation**

max 0.20db after 1000 matings.

**Temperature ranges for Operation**

-40°C - +85°C.