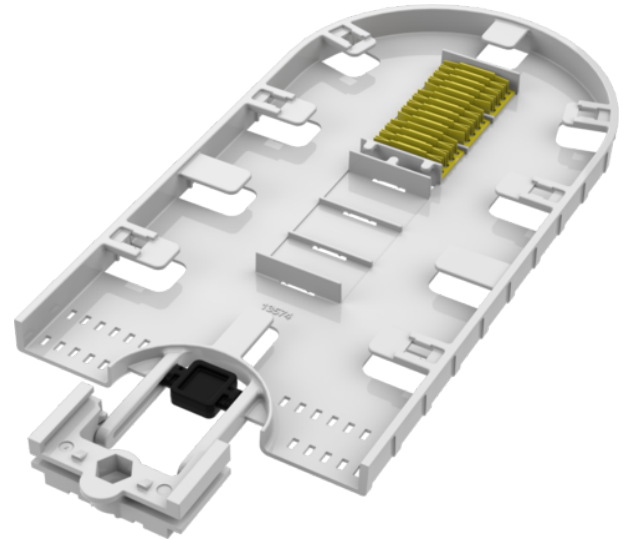


Product name	Splice tray BTLM 12 ribbon fitting Coyote dome 622 BT UO
Product code	5061142
GTIN	7332811377129
ETIM-Class	EC000762



PRODUCT SPECIFICATIONS

Splice tray for 12 ribbon sleeves fitting Coyote fiber optic closures BT UO 622.

Measurements

Length	310 mm
Height	19 mm
Width	80 mm
Weight	205 g

Technical Specifications - Splice Trays

Type	Splice Tray
Model	Coyote BT UO
Max Fibre Count per tray	12
Splice Tray Colour	Gray
Splice Tray Lid Colour	Transparent
Splice Holder Included	Yes
Splice Holder Type	Ribbon Fibre
Splice Protection Sleeves Per Holder	3