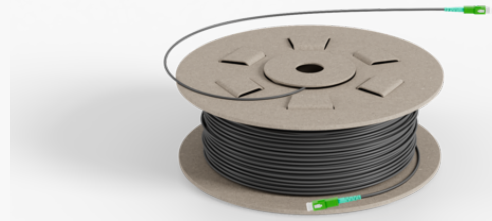


| | |
|--------------|---|
| Product name | External drop cable OH/UG 1xG657A2 TB PUR OD 3mm SCA-SCA 80m |
| Product code | 123673 |
| GTIN | |
| ETIM-Class | EC001263 |



PRODUCT SPECIFICATIONS

1F G657A2 pre-terminated 3mm overhead and underground (OH/UG) drop cables eliminating the need to splice fibres allows for time-saving installations. Depending on length the cables are delivered on coils or reels with alternative connectors in both ends or with open end. PIA approved and suitable for max 68 m span lengths. IEC connector loss grade B.

Measurements

| | |
|--------|--------|
| Length | 235 mm |
| Height | 235 mm |
| Width | 83 mm |
| Weight | 762 g |

Physical Characteristics

| | |
|--------------------------|---------------------|
| Fibre Count | 1 |
| Cable Construction | Tight Buffered (TB) |
| Fibre Type | ITU-T G.657 A2 |
| Outer Sheath Material | PUR (Polyurethane) |
| Colour of Cable Sheath | Black |
| Cable Diameter | 3 mm |
| Cable Diameter Tolerance | +/- 0.2 mm |
| Nominal Cable Weight | 9 kg/km |

Technical Specifications - Cable Characteristics

| | |
|---|---|
| Tensile Break Load | 1,000 N |
| Tensile Strength (N) IEC-60794-1-21-E1 | 300 N |
| Crush Resistance - IEC- 60794-1-21-E3 | 1,000 N/10cm |
| Min. Bend Radius (During Installation) IEC-60794-1-21-E11 | 5 mm |
| Water Penetration Test IEC-60794-1-22-F5 | 1 m water head, 3m sample, 24 hours |
| Temperature Performance Installation IEC-60794-1-22-F1 | -5°C to +60°C (Max. change in attenuation shall be ≤ 0.15 dB/km) |
| Temperature Performance Operation IEC-60794-1-22-F1 | -20°C to +60°C (Max. change in attenuation shall be ≤ 0.15 dB/km) |
| Voltage Test 11 KV | If installed along power line minimum vertical distance of 1.8 m should be maintained |
| Max Span Length | 68 m |

Technical Specifications - Fibre Characteristics

| | |
|-----------------------------------|--|
| Fibre Type | ITU-T G.657 A2 |
| Attenuation 1310nm | ≤ 0.33 dB/km dB/km |
| Attenuation 1550nm | ≤ 0.22 dB/km dB/km |
| Attenuation 1625nm | ≤ 0.25 dB/km dB/km |
| Chromatic Dispersion 1285-1330nm | ≤ 3.5 ps/(nm•km) |
| Chromatic Dispersion 1550nm | ≤ 18 ps/(nm•km) |
| Chromatic Dispersion 1625nm | ≤ 22 ps/(nm•km) |
| PMD (Max. Individual) | ≤ 0.2 ps/ $\sqrt{\text{km}}$ |
| PMD (Link design value) | ≤ 0.06 ps/ $\sqrt{\text{km}}$ |
| Cable cut off wavelength | ≤ 1260 nm |
| MFD 1310nm | 8.8 +/- 0.4 nm |
| MFD 1550nm | 9.9 +/- 0.5 nm |
| Core-Cladding Concentricity Error | ≤ 0.5 μm |
| Cladding Diameter | 125 +/- 0.7 μm |
| Cladding Non Circularity | ≤ 0.7 % |
| Primary Coating Diameter | 242 \pm 5 (Uncolored) / 250 \pm 10 (Colored) μm |