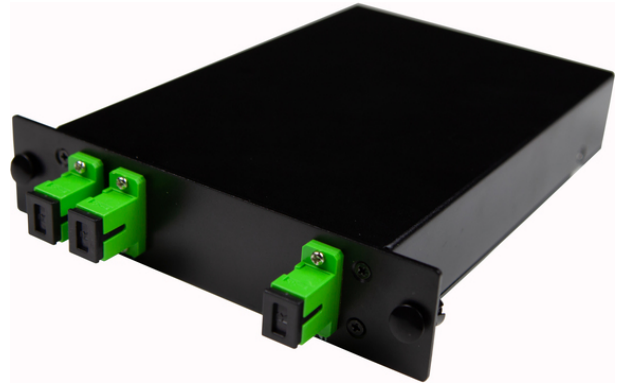


Product name	PLC Splitter 1x2 0.9mm G657A 1.5m SC/APC LGX
Product code	5188596
GTIN	7332811199639
ETIM-Class	EC003870



PRODUCT SPECIFICATIONS

Planar Lightwave Circuit (PLC) fiber optical splitters feature low IL and PDL, high isolation that suit for 1260 -1650nm optical fibre signals splitting and distributing in PON and CATV networks. Provide uniform division of an optical signal from one input fibre to multiple outgoing fibres.

Optical specifications do not include connector loss.

Measurements

Height	1 mm
Weight	235 g

Technical Specifications - Splitter

Splitter Type	PLC - LGX
Port Configuration	1x2
Connector Type	SC/APC
Wavelengths	1260 - 1650 nm
Fibre Type	ITU-T G.657 A1
Max Insertion Loss	3.8 dB
Max Loss Uniformity	0.5 dB
Max Polarisation Dependant Loss	0.2 dB
Max Directivity	55 dB

Max Return Loss	55 dB
Temperature ranges for Operation	-40°C - +85°C
Temperature ranges for transport and storage	-40°C - +85°C