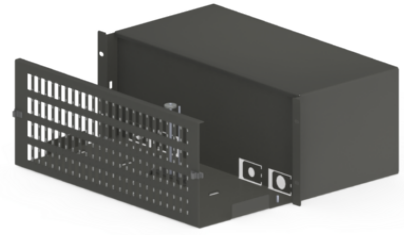


| | |
|---------------------|--|
| Product name | ODF 19 4U 96xSCD sliding Black, D230mm |
| Product code | 5057757 |
| GTIN | 7332811086984 |
| ETIM-Class | EC001130 |



PRODUCT SPECIFICATIONS

The draw-out-type ODF (optical distribution frame) is designed for the placement of up to 192 optical SC connectors indoors. The design of the patch panel enables to install it into a 19" rack. The ODF is equipped with needle holder for optical splice trays and strain reliefs for the cable FRP. Prepared for cable mounting at the rear (PG bushings).

- Capacity: Up to 192 optical SC connectors (96 duplex SC adaptors)
- Needle holder for optical splice trays
- Possibility to fit it with PG bushings
- Installation into a 19" base
- Height: 4U
- Depth: 230 mm
- Material: Black metal

Measurements

| | |
|---------------|---------|
| Length | 490 mm |
| Height | 195 mm |
| Width | 235 mm |
| Weight | 6,735 g |

Technical Specifications - ODFs

| | |
|----------------------|--------------|
| Fibre Count | 192 |
| Adapter Plate | 96xSC Duplex |

| | |
|------------------------------|---------------------------|
| Preterminated | No |
| Sliding Enclosure | Yes |
| Mounting Type | 19" rack |
| Number of Rack Spaces | 4 U |
| Depth - ODF | 230 mm |
| Colour | Black RAL 9005 |
| Material | Powder Coated Steel Sheet |
| Environment | Indoor |