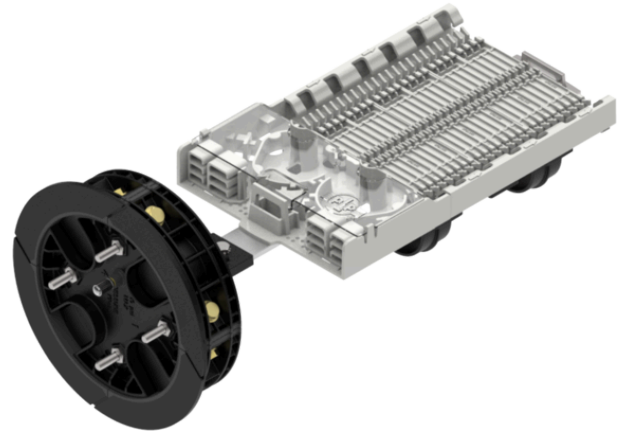


Product name	Coyote 6.5x17 288F dome/dark fiber
Product code	5060085
GTIN	7332811313806
ETIM-Class	EC002598



PRODUCT SPECIFICATIONS

Optical Dome Closure (ODC) for installation in fibre optic telecommunication networks. Watertight according to IP68 and used for splicing traditional cables, ADSS cables and micro-cables underground, directly buried, in manholes or aerial. The domes can be pole-, wall- or wire mounted. Installation is quick and easy, and no heat shrinkage is required. Sealing between dome and cable is done with silicone grommets that are available for different cable dimensions and as single or multi-pass. Midspan is easily performed either through a single grommet with multi-pass or through two ports in the divisible base. The dome is tested according to Bellcore General Requirement GR-771-CORE.

- Fibre capacity: 288
- Splice module capacity: 3
- Entry ports: 4
- Dimension: 453 × 218 (256) mm
- Dark fiber storage

Measurements

Length	431 mm
Height	165 mm
Width	165 mm
Weight	3,900 g

Technical Specifications - Termination/Distribution Boxes

Environment	Outdoor
Number of splices	288

Number of Entry/cable ports	4
Cable/duct diameters	3-32mm
Mid-span access	Yes
Splice trays included	0
Number of splice trays	24
Max Fibre Count per tray	12
Dark fiber storage	Yes
IP Codes	IP68
Impact protection degree	IK10
Colour	Black
Material	Polypropylene Fiberglass
UV Proof	Yes