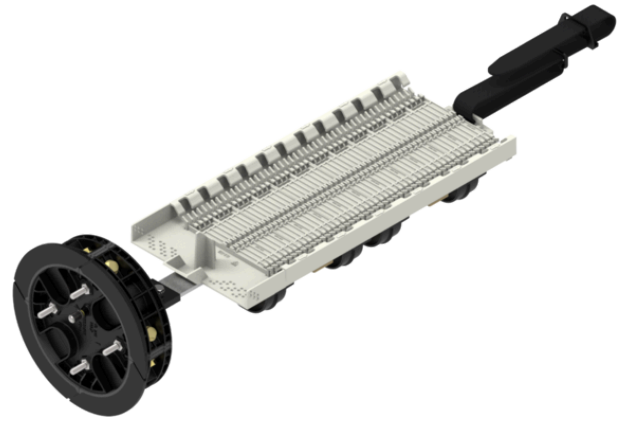


<b>Product name</b>	Coyote 6.5x22 576F dome
<b>Product code</b>	5060088
<b>GTIN</b>	7332811313837
<b>ETIM-Class</b>	EC002598



## PRODUCT SPECIFICATIONS

Optical Dome Closure (ODC) for installation in fibre optic telecommunication networks. Watertight according to IP68 and used for splicing traditional cables, ADSS cables and micro-cables underground, directly buried, in manholes or aerial. The domes can be pole-, wall- or wire mounted. Installation is quick and easy, and no heat shrinkage is required. Sealing between dome and cable is done with silicone grommets that are available for different cable dimensions and as single or multi-pass. Midspan is easily performed either through a single grommet with multi-pass or through two ports in the divisible base. The dome is tested according to Bellcore General Requirement GR-771-CORE.

- Fibre capacity: 576
- Splice modulle capacity: 6
- Entry ports: 4
- Dimension: 574 x 218 (256) mm

## Measurements

<b>Length</b>	558 mm
<b>Height</b>	165 mm
<b>Width</b>	165 mm
<b>Weight</b>	4,535 g

## Technical Specifications - Termination/Distribution Boxes

<b>Environment</b>	Outdoor
<b>Number of splices</b>	576

<b>Number of Entry/cable ports</b>	4
<b>Cable/duct diameters</b>	3-32mm
<b>Mid-span access</b>	Yes
<b>Splice trays included</b>	0
<b>Number of splice trays</b>	48
<b>Max Fibre Count per tray</b>	12
<b>Dark fiber storage</b>	No
<b>IP Codes</b>	IP68
<b>Impact protection degree</b>	IK10
<b>Colour</b>	Black
<b>Material</b>	Polypropylene Fiberglass
<b>UV Proof</b>	Yes