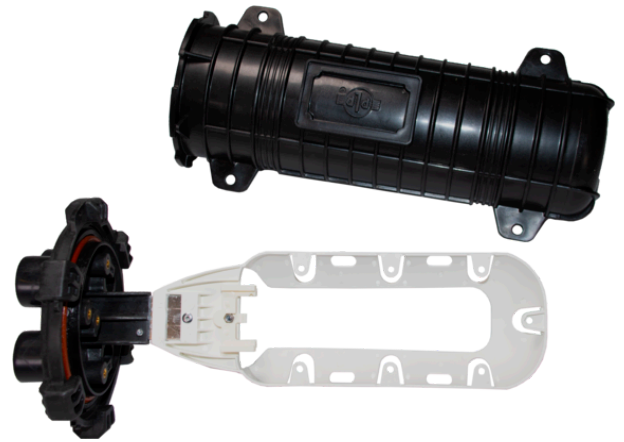


Product name	FBG-500 144/192F closure Incl. one 36F S&L splice tray
Product code	5062787
GTIN	
ETIM-Class	EC002598



## Measurements

Length	510 mm
Height	210 mm
Width	210 mm
Weight	3,220 g

## Technical Specifications - Termination/Distribution Boxes

Environment	Outdoor
Number of splices	192
Number of Entry/cable ports	4
Mid-span access	Yes
Splice trays included	1
Number of splice trays	4
Max Fibre Count per tray	36
Splice Holder Included	Yes
Dark fiber storage	Yes
Lockable	Yes
IP Codes	IP68
Impact protection degree	ik10
Colour	Black
Material	polypropylene fiberglass
UV Proof	Yes

